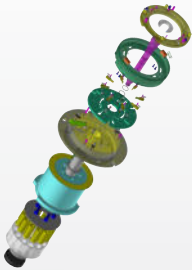


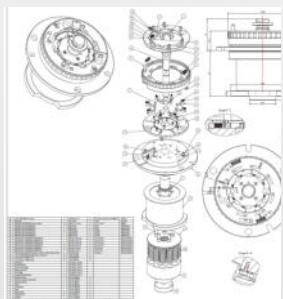
**Custom-made Machines,
Calculations,
Simulation,
Tooling,
Analysis,
R&D**



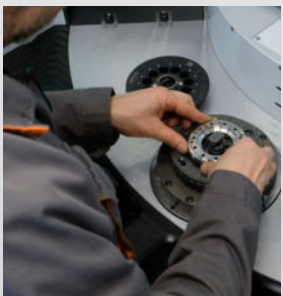
**Mechanical engineering
Design office
Automation
Robotics**



Study and design.



Technical data.



Realization.



Reliable and robust mechanical design to meet your requirements from the micron to the decameter.



Robot programming and integration adapted to your needs and products.



Simple automation on a solid mechanical base for a reliable, maintainable machine.



ZI Inova 3000 - 4 Allée N°3
88150 Thaon-les-vosges



Le
sur-mesure
industriel.



+33 (0)3 29 39 00 70



info@le-sur-mesure-industriel.fr



www.le-sur-mesure-industriel.fr



**Instrumentation, Workstations,
Packaging, Marking,
Test benches, Assembly,
Customized equipment
Integrated Controls and
Measurements,**

**An international
clientele.**



**From problem analysis
to on-site equipment
commissioning.**



Le Sur-mesure Industriel is an industrial service company founded in 1991, with machine-builder status. You benefit from a single point of contact and our manufacturer's warranty.

Our assets

- Ability to adapt to a wide variety of issues in different sectors of activity
- Ability to propose solutions that were not part of a specification
- Search for the most reliable and efficient technical solution
- Our creativity, expertise and experience
- Our ability to handle and manage projects abroad

Our values and commitments

- Working directly with our customers and suppliers to ensure quality exchanges and relationships
- Design and construction of durable machines
- Support throughout the project
- 100% project completion, no legal claims



Multisector

Agri-food, Aeronautics, Automotive, Medical, Mechanics, Weapons, Leisure.



Our team

10 persons, including :
6 mechanical project managers,
2 automation project managers,
1 instrumentation project manager,
1 secretary-accountant



Design software

TopSolid'Design / Creo / Solidworks
SEE Expert / EPlan
Staubli SRS
Other software can be used if required.



Assembly workshop

A 650m² workshop is next to the design office to assemble and set-up all machines and equipment prior to shipment.

CREATIVITY

SUPPORT

REACTIVITY

ADVICES

RELIABILITY

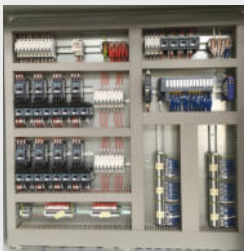
Customer



**Expertise
Suggestions
Feasibility**

Customer satisfaction

**Issue Specifications
Need**



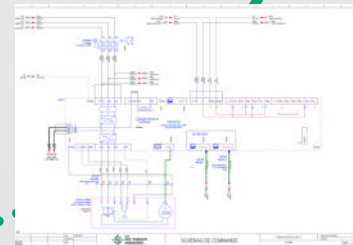
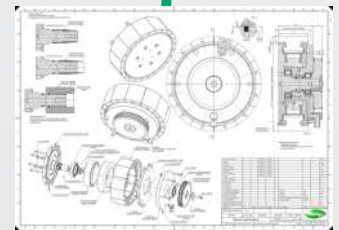
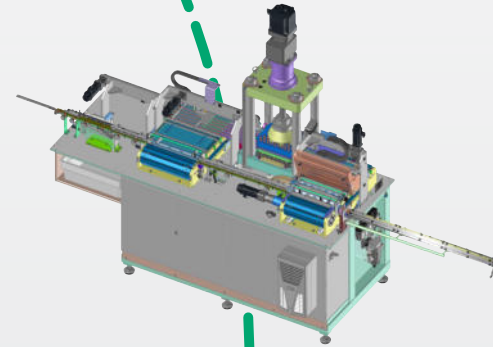
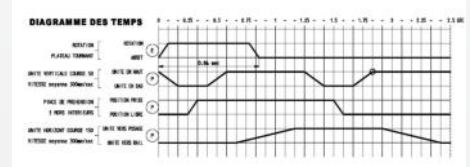
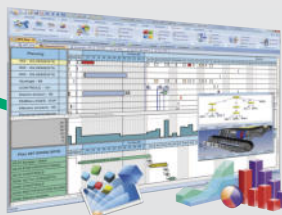
Item	Quantity	Unit	Description	Material	Reference
...

**R&D
Analysis**

- Process research
- Technical calculations
- CAD modeling
- Concept review
- Overall drawings
- Wiring diagrams
- Design review

ERP

- Procurement
- Assembly
- Programming
- Set-up
- Technical documentation
- Installation
- Training
- Warranty
- After-sale service



+33 (0)3 29 39 00 70



info@le-sur-mesure-industriel.fr



www.le-sur-mesure-industriel.fr

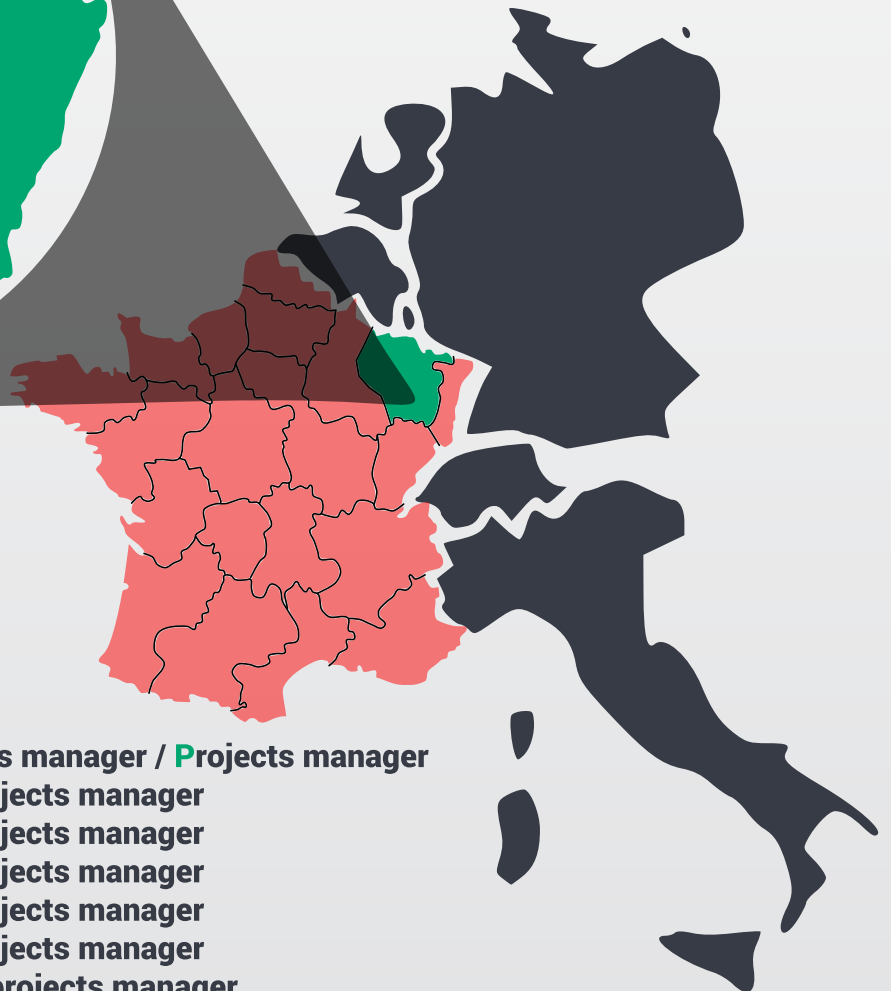




5 new customers a year since 1991

1991 / Lamoise	2010 / Tréfilerie des Vosges
1992 / Clairefontaine	2011 / Aesculap BBraun
1992 / Norske Skog Golbey	2011 / Marcillat Lactalis
1993 / Eclatec	2012 / Legrand
1993 / Parisot meubles	2012 / Merck Millipore
1994 / Trane	2012 / Schenck
1995 / Arjo Wiggings	2012 / Cimos (BA)
1995 / ENSTIB	2012 / Wongleon
1995 / Garrett (FR/JP/SK/CN)	2013 / CCN Booster (SK/CN)
1996 / Baccarat	2013 / Manurhin MHR
1997 / Aérofun	2013 / Compa (RO)
1997 / Nordon - Fives Cryo	2014 / Institut Jean Lamour
1998 / SIMB	2014 / Renk France
2000 / Gantois	2015 / Cogeme (IN)
2000 / Hager Electro	2015 / VT2I
2000 / Ober	2015 / Fromagerie Ermitage
2003 / Les Zelles	2016 / Aptar Beauty
2003 / Glaces Thiriet	2016 / Fertil
2005 / Essilor	2017 / Mahle Behr
2005 / Gris découpage	2017 / Dow France
2005 / Viskase (FR/US)	2019 / Canson
2005 / Kaysersberg Pack.	2019 / Clairefontaine Rhodia
2006 / EPB Séco Tools	2019 / Endress + Hauser
2006 / Liebherr Mining	2019 / Fives Celes
2006 / Woco / Anvis	2020 / Moustache Bikes
2007 / IUT de Mont-de-Marsan	2021 / Debo Tech (CN)
2007 / Sitpa Nestlé	2021 / Fonatec (CN)
2008 / United Springs	2021 / Konica Minolta
2010 / Messier Bugatti Safran	2022 / Satisloh (DE)

Contact and Localisation



Marc THIERY
Jean-Baptiste GERARD
Olivier WILLMANN
Serge GUGGENHEIM
Sylvain MANGEL
Gabriel GERARD
Thierry LAMQUIN
Aurélien NOURDIN
Francis GREMILLET
Joëlle DECORSAINT

Manager / Sales manager / Projects manager
Mechanical projects manager
Mechanical projects manager
Mechanical projects manager
Mechanical projects manager
Mechanical projects manager
Measurement projects manager
Automation projects manager
Automation projects manager
Accounting

 +33 (0)3 29 39 00 70

 info@le-sur-mesure-industriel.fr

 www.le-sur-mesure-industriel.fr

